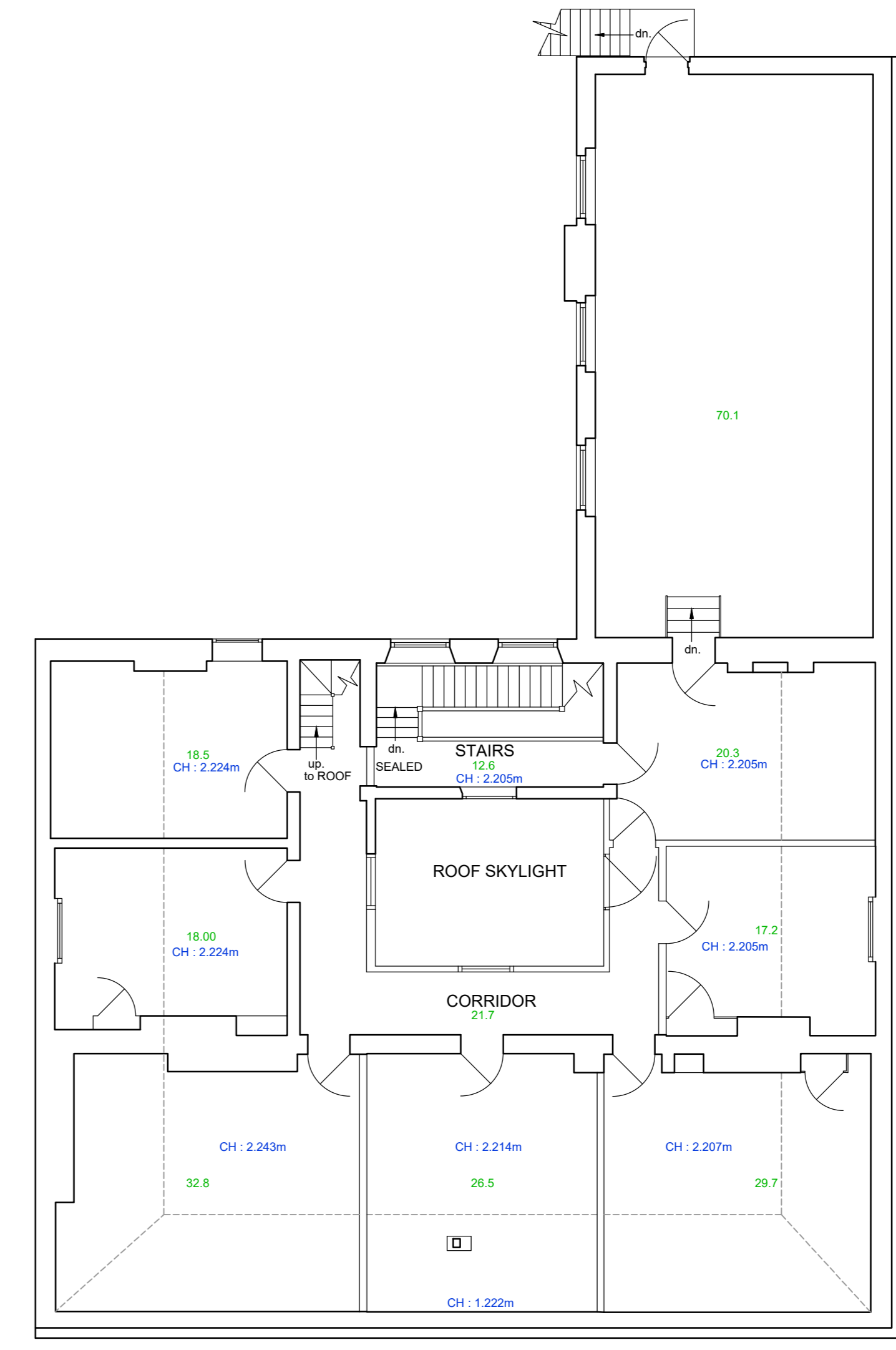


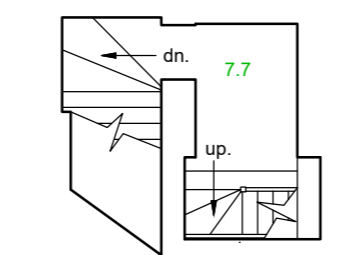
BASEMENT
G.I.A. - 280 sq.m.



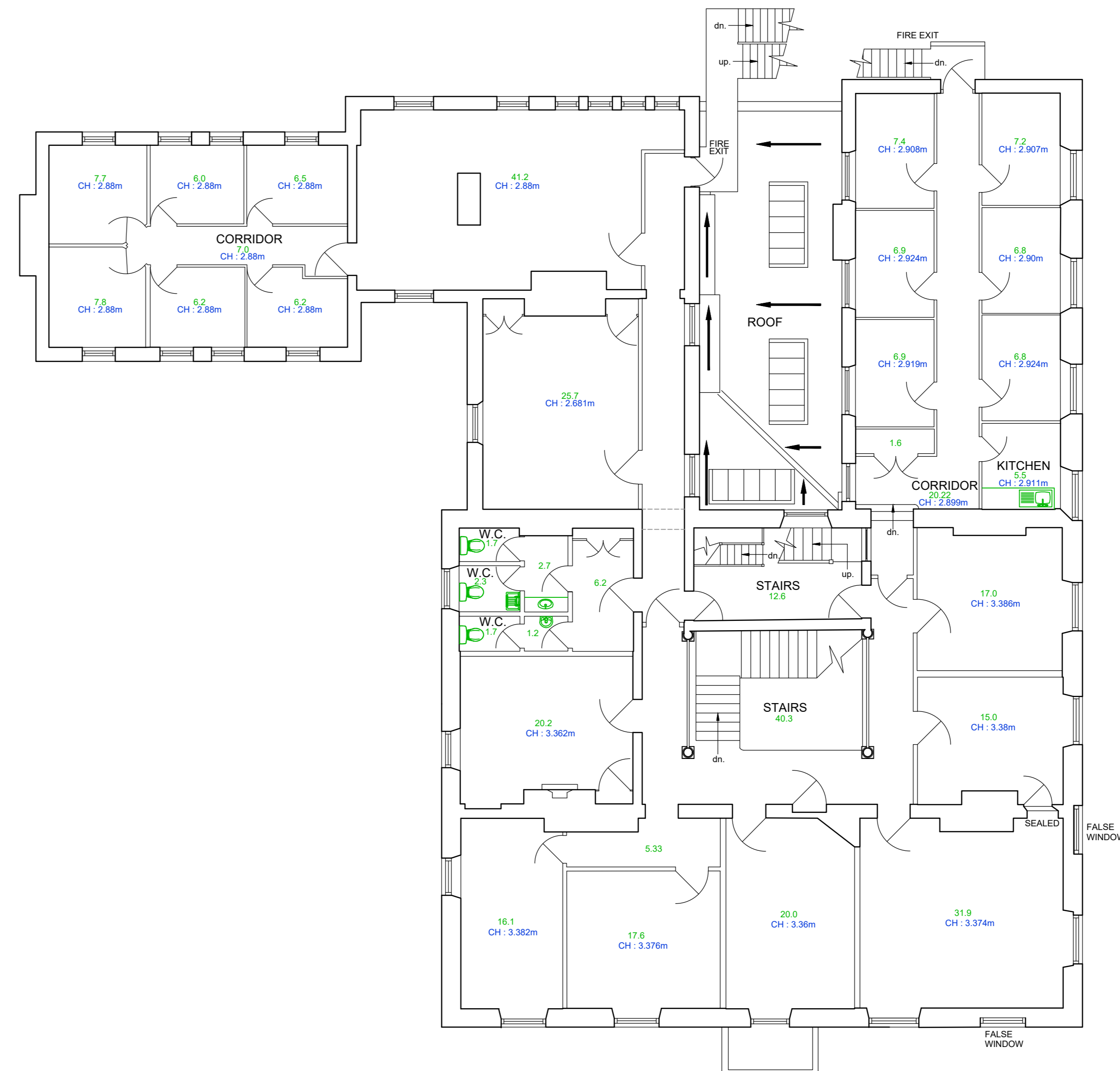
SECOND FLOOR
G.I.A. - 512 sq.m.



GROUND FLOOR
G.I.A. - 563 sq.m.
G.E.A. - 619 sq.m.



MEZZANINE FLOOR
G.I.A. - 8 sq.m.



FIRST FLOOR
G.I.A. - 451 sq.m.

- GAS PIPES
- RISE / DROP IN PIPE LEVEL
- PIPE DIAMETER & DIRECTION
- GAS METER
- METER CONTROL VALVE
- EMERGENCY CONTROL VALVE
- GAS ISOLATION VALVE
- GAS ISOLATION VALVE (AT END OF RUN)
- SOLINOID VALVE
- REGULATOR (GOVERNOR)